
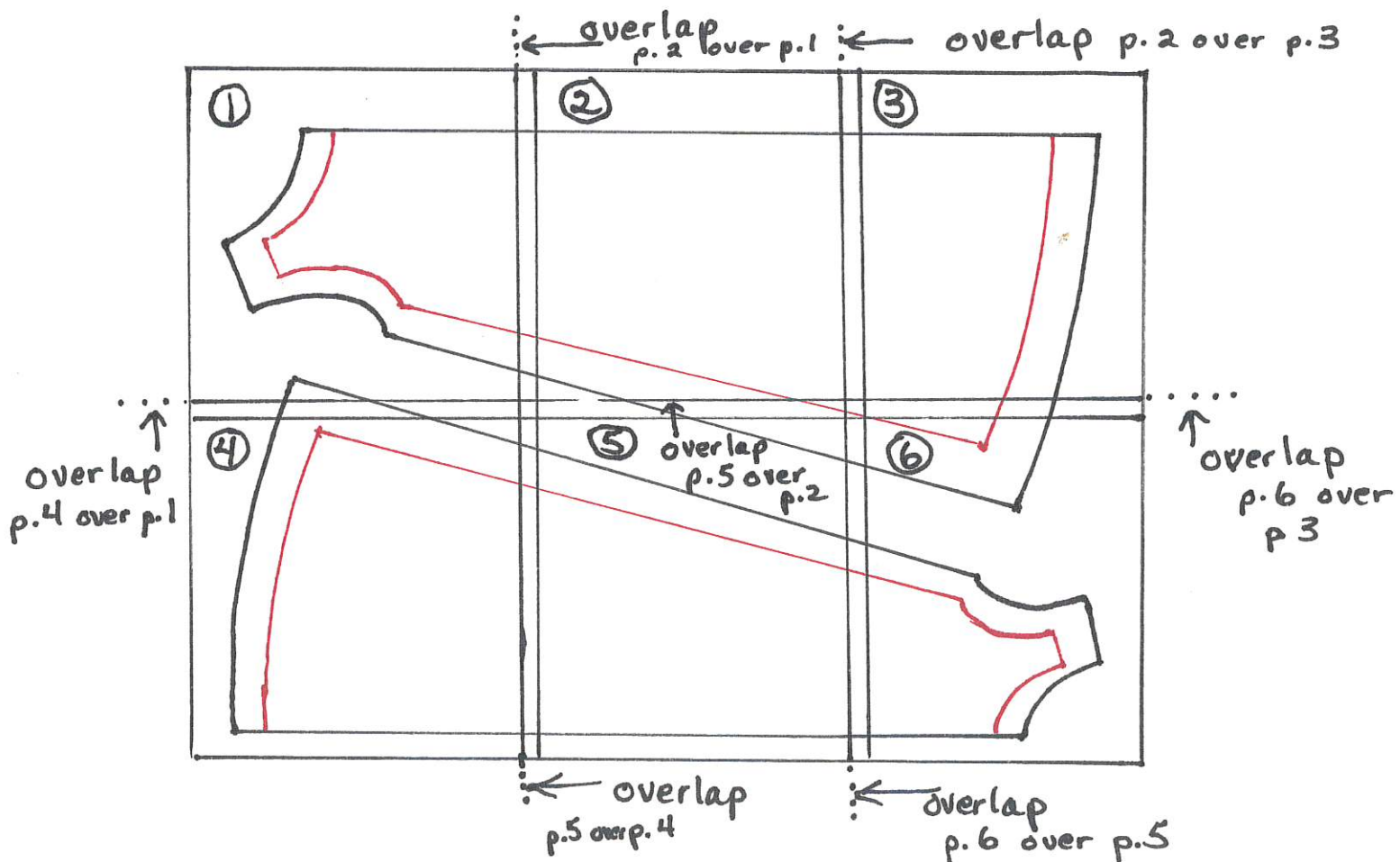


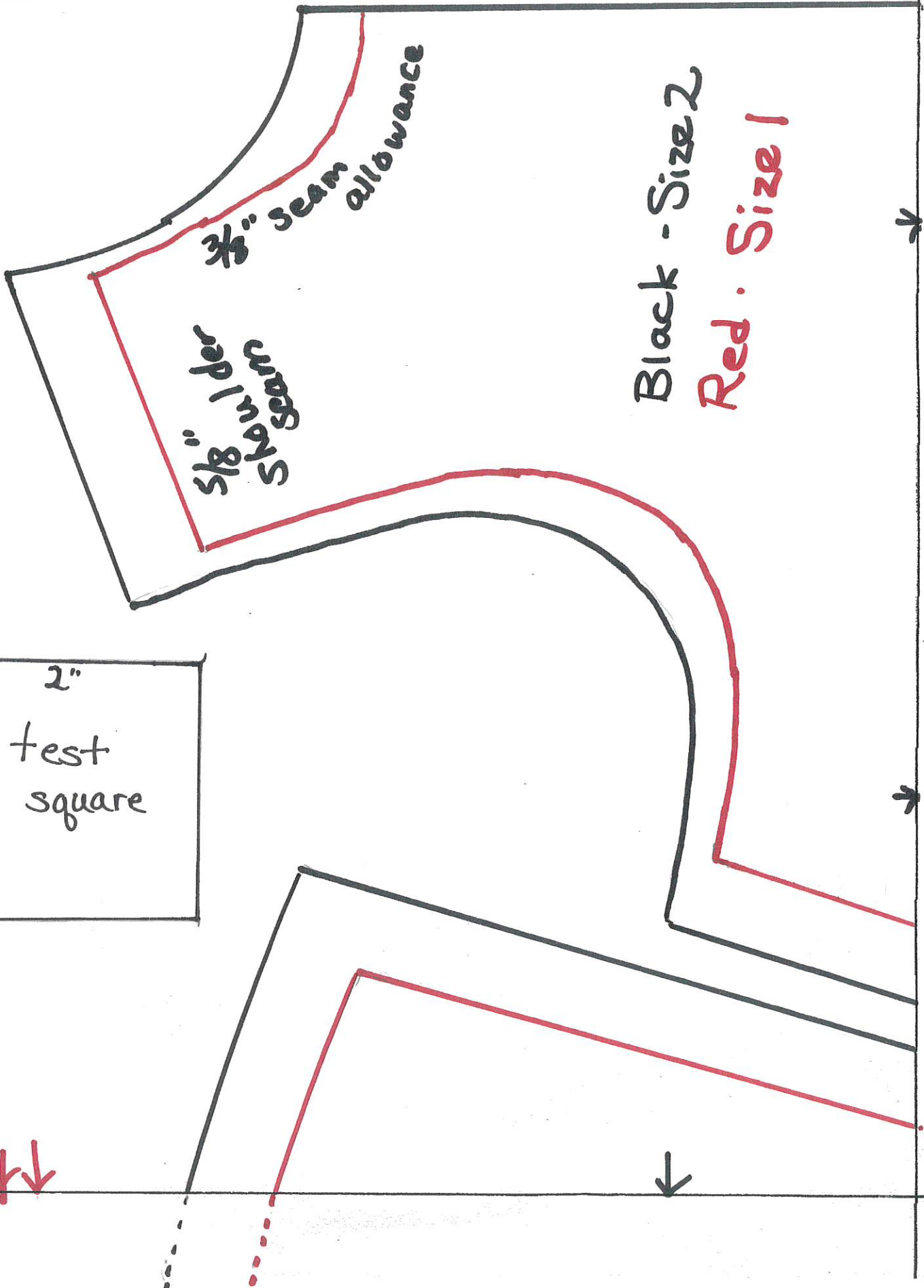
Girls Top Sizes 1 and 2

- Print page 1 with the 2" test square. Measure the square and adjust the settings on the printer as needed.
- Tape the pattern together starting with page 1 in the upper left hand corner. Place page 2 to the right, overlapping page 1, matching pattern lines and marks.  Tape.
Place page 3 to the right of page 2, overlapping, matching pattern lines and marks. Tape.
Place page 4 overlapping the bottom of page one, matching pattern lines and marks. Tape.
Page 5 overlaps page 4 with page 2 above it. Tape.
Page 6 overlaps page 5 with page 3 above it. Tape.



①

Girls top Sizes 1 & 2

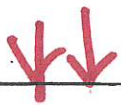
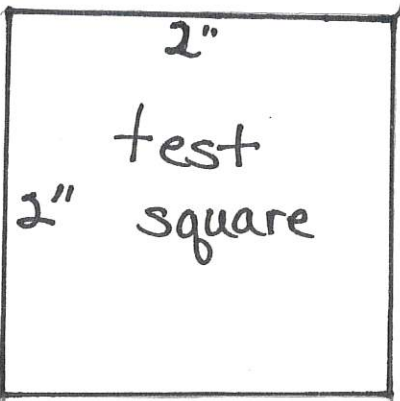


1/8" seam allowance

5/8" per seam

Black - Size 2

Red - Size 1



②

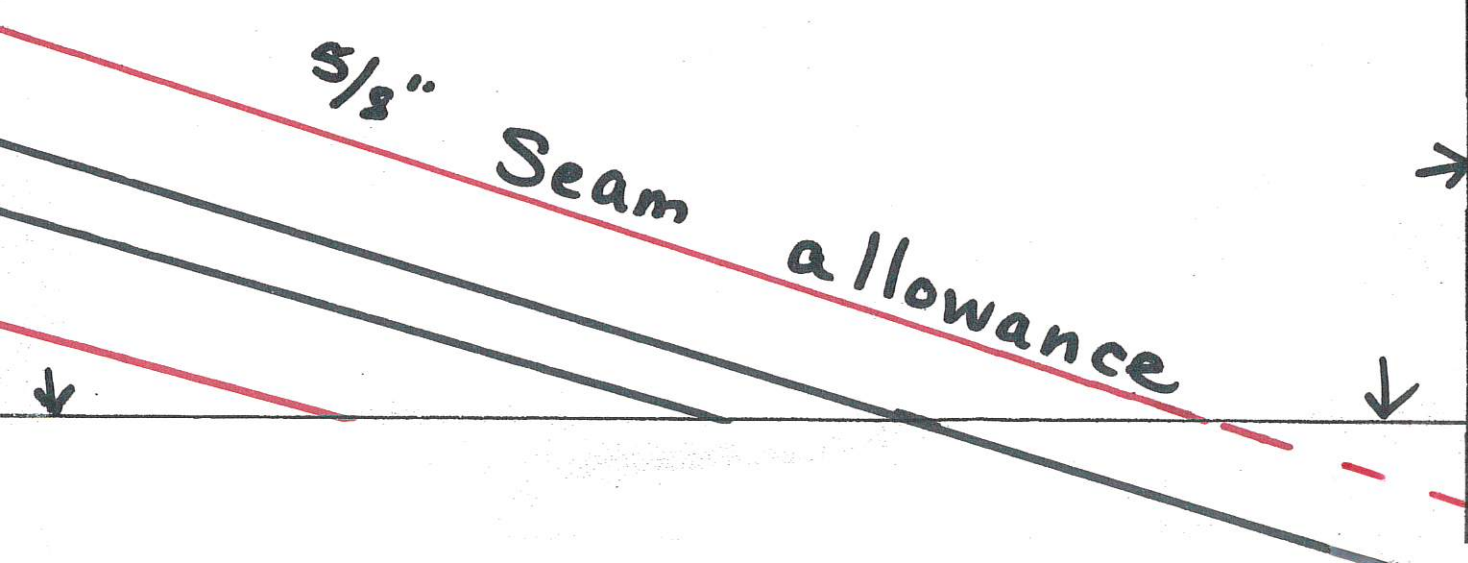
↑
Place on fold
↑

Girls Top

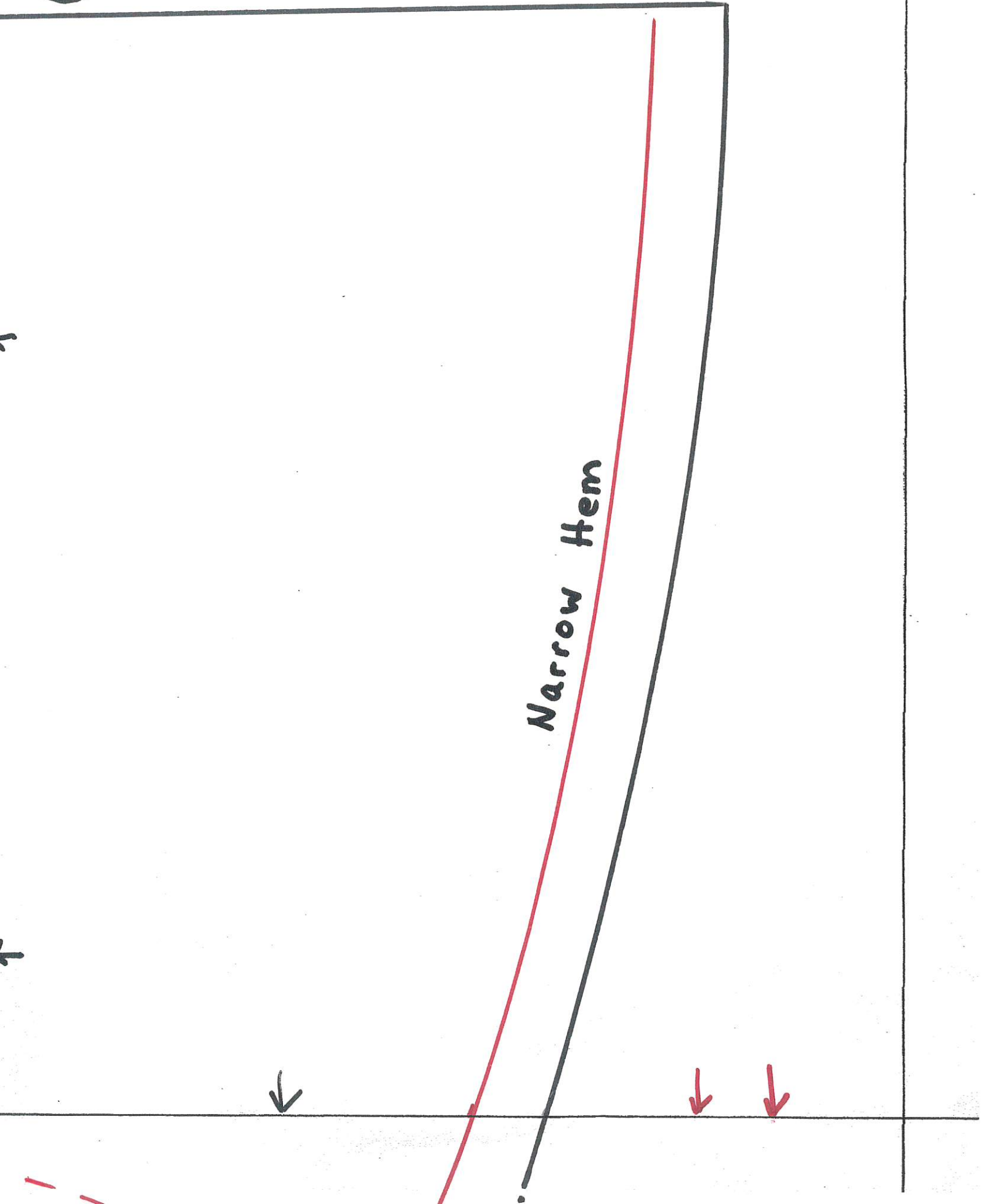
Front

Cut 1 on fold

5/8" Seam allowance



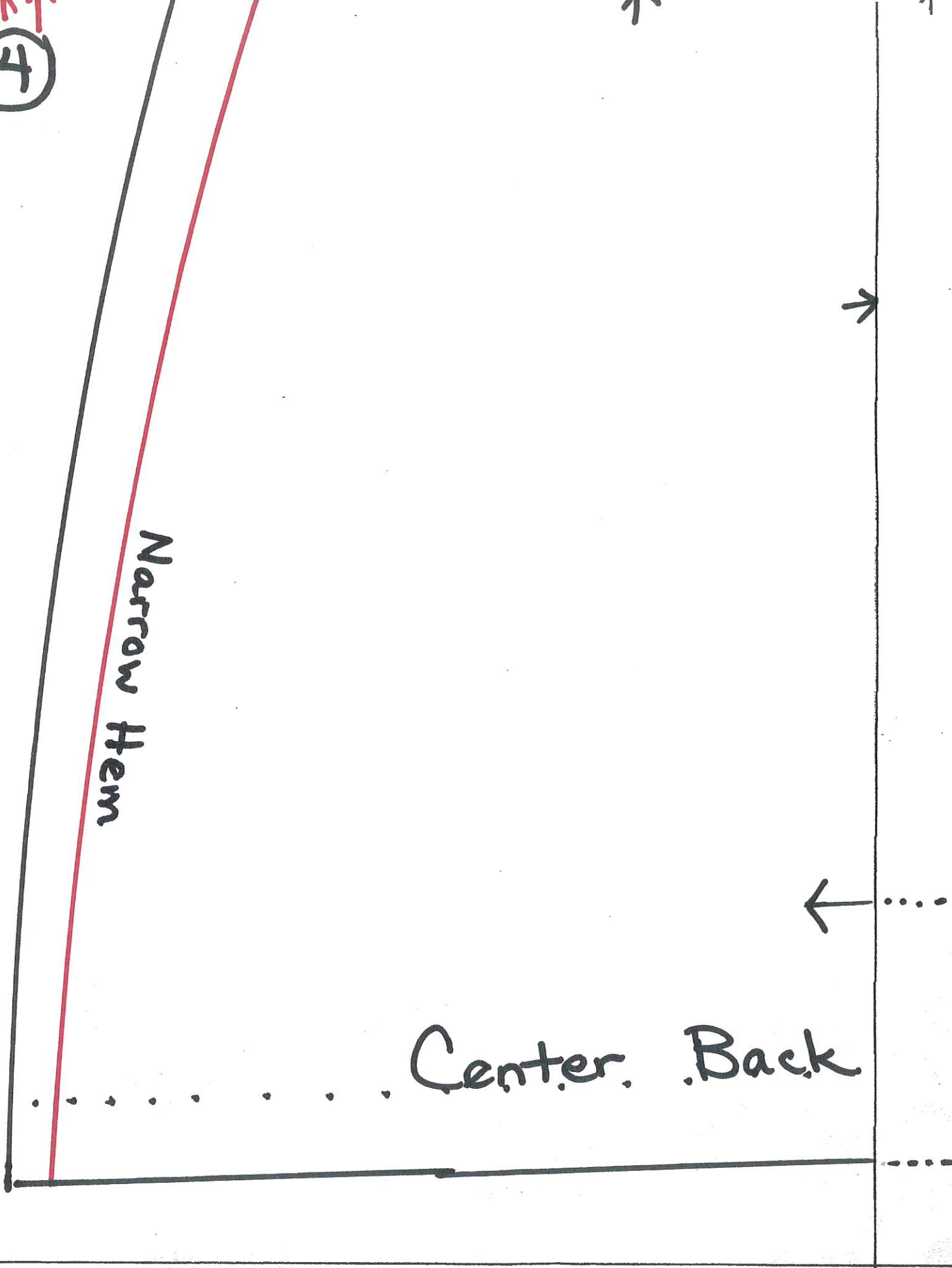
3



④

Narrow Hem

Center Back



5

5/8" Seam allowance

Girls
TOP

Back

Cut 2

Grainline

Stop
Seam

5/8" Seam allowance

6

