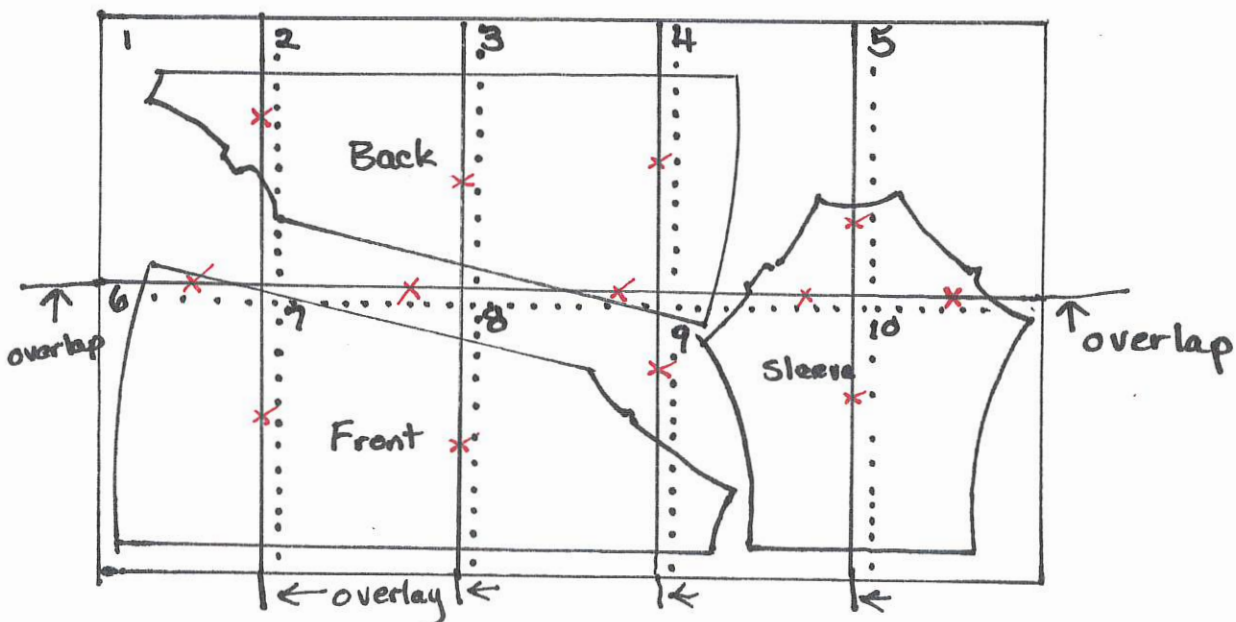


Layette Gown

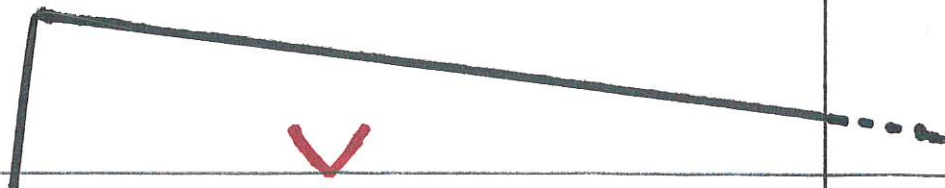
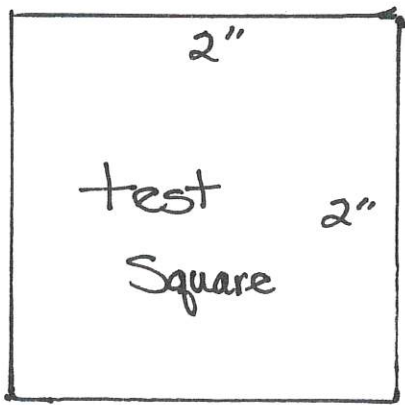
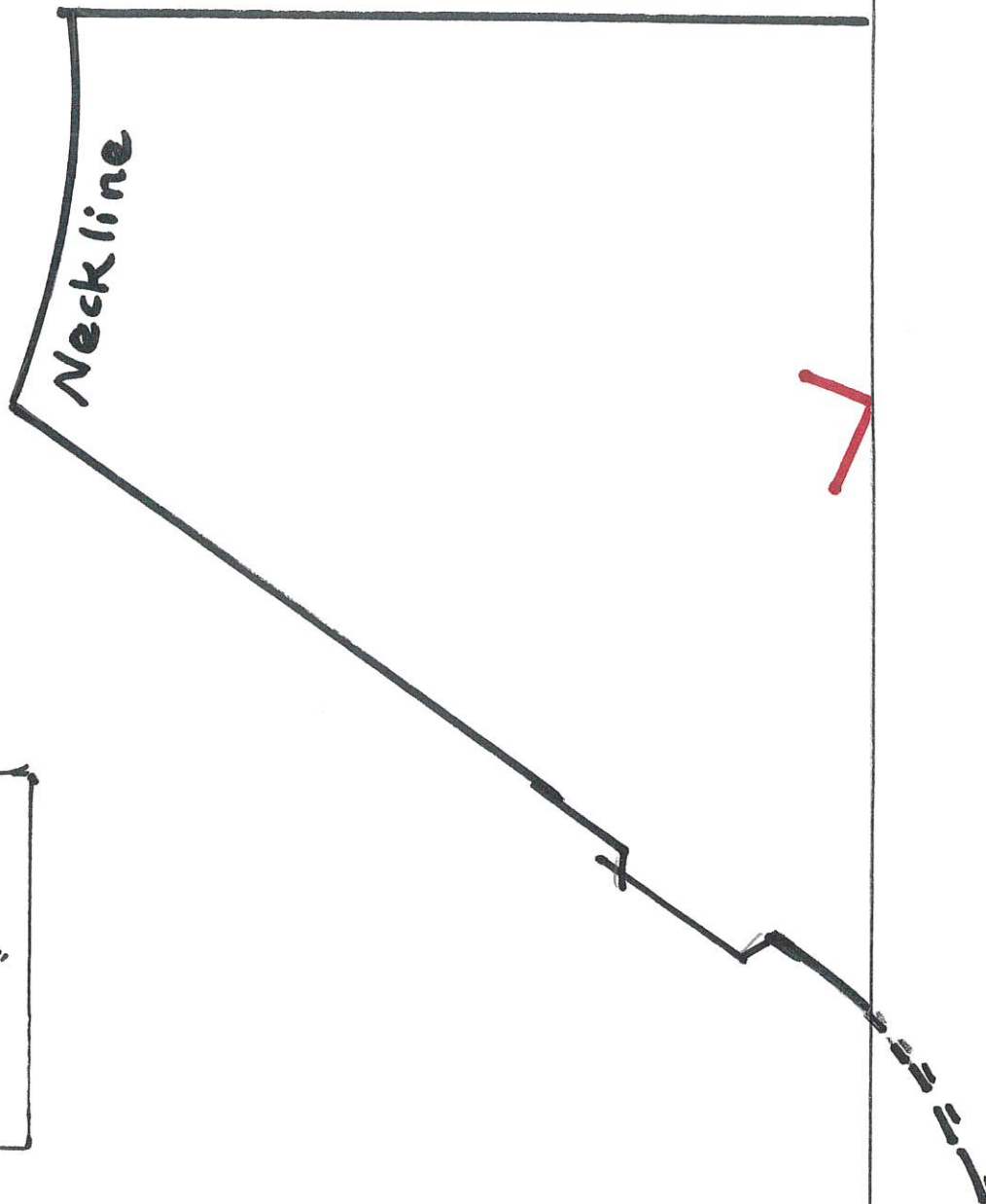
- Print page 1 with the 2" test square. Measure the square and adjust the settings on the printer as needed.
- Lay all the pages out in numerical order.
- Tape the pattern together starting with page 1 in the upper left hand corner. Place page 2 to the right, overlapping page 1, matching pattern lines and marks. ✕ Tape.
- Place page 3 to the right of page 2, overlapping, matching pattern lines and marks. Tape.
- Continue overlapping, matching pattern lines and marks for pages 4 and 5.
- Page 6 begins **row 2**. Page 6 overlaps the bottom of page 1, matching pattern lines and marks. Tape.
- Page 7 overlaps page 6 with page 2 above it.
- Continue overlapping pattern pieces, matching pattern lines and marks, then taping each piece as you go.



Layette Gown

Page 1

Row 1

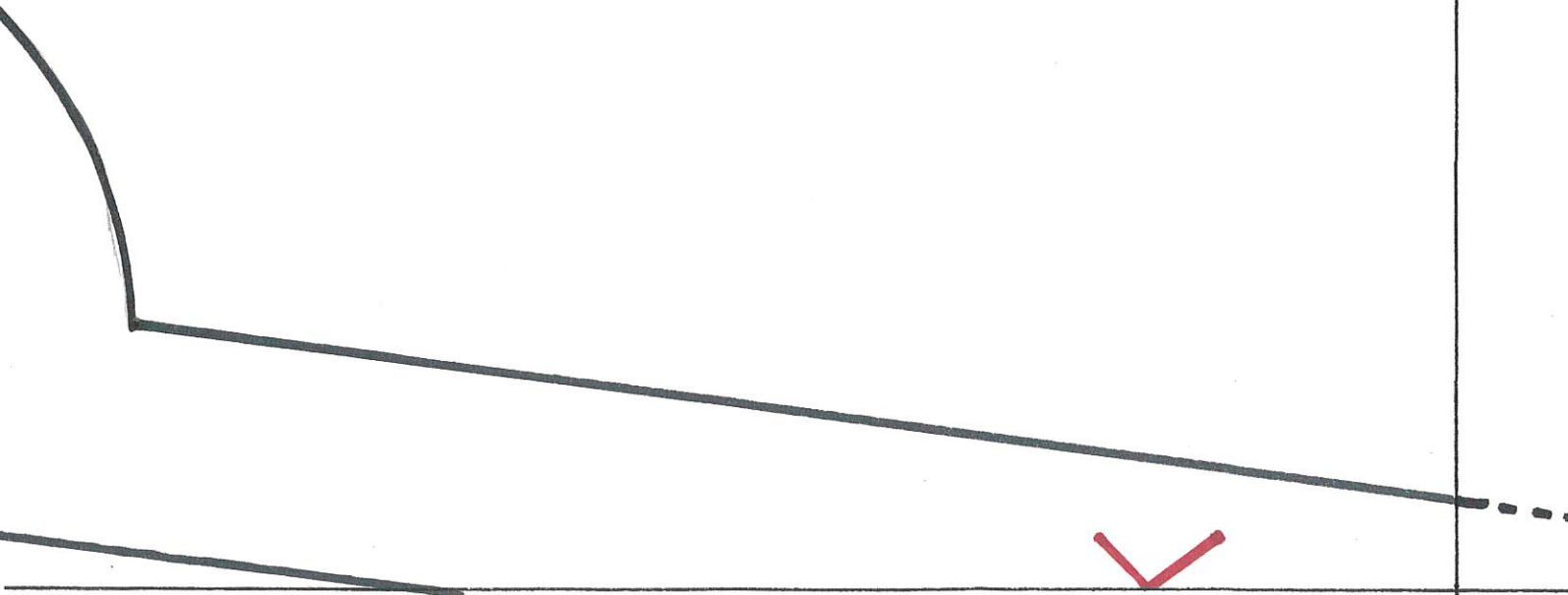


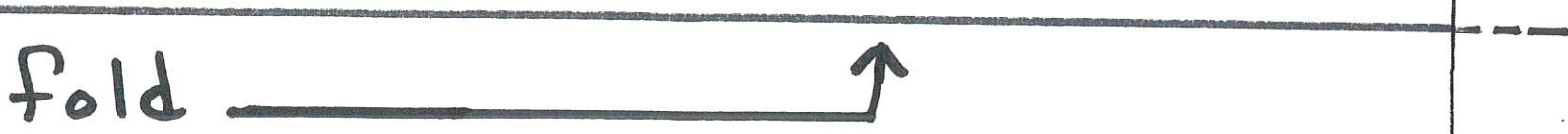
↑ Place on

Layette
Gown

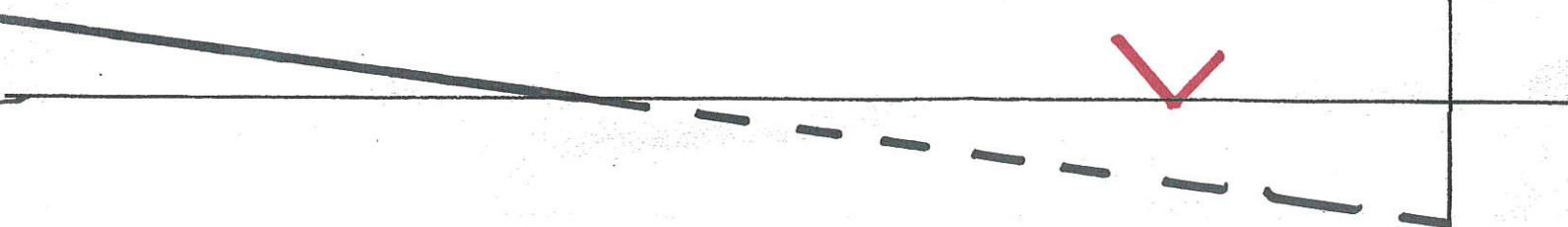
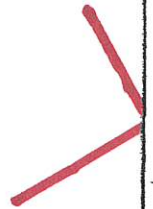
Back

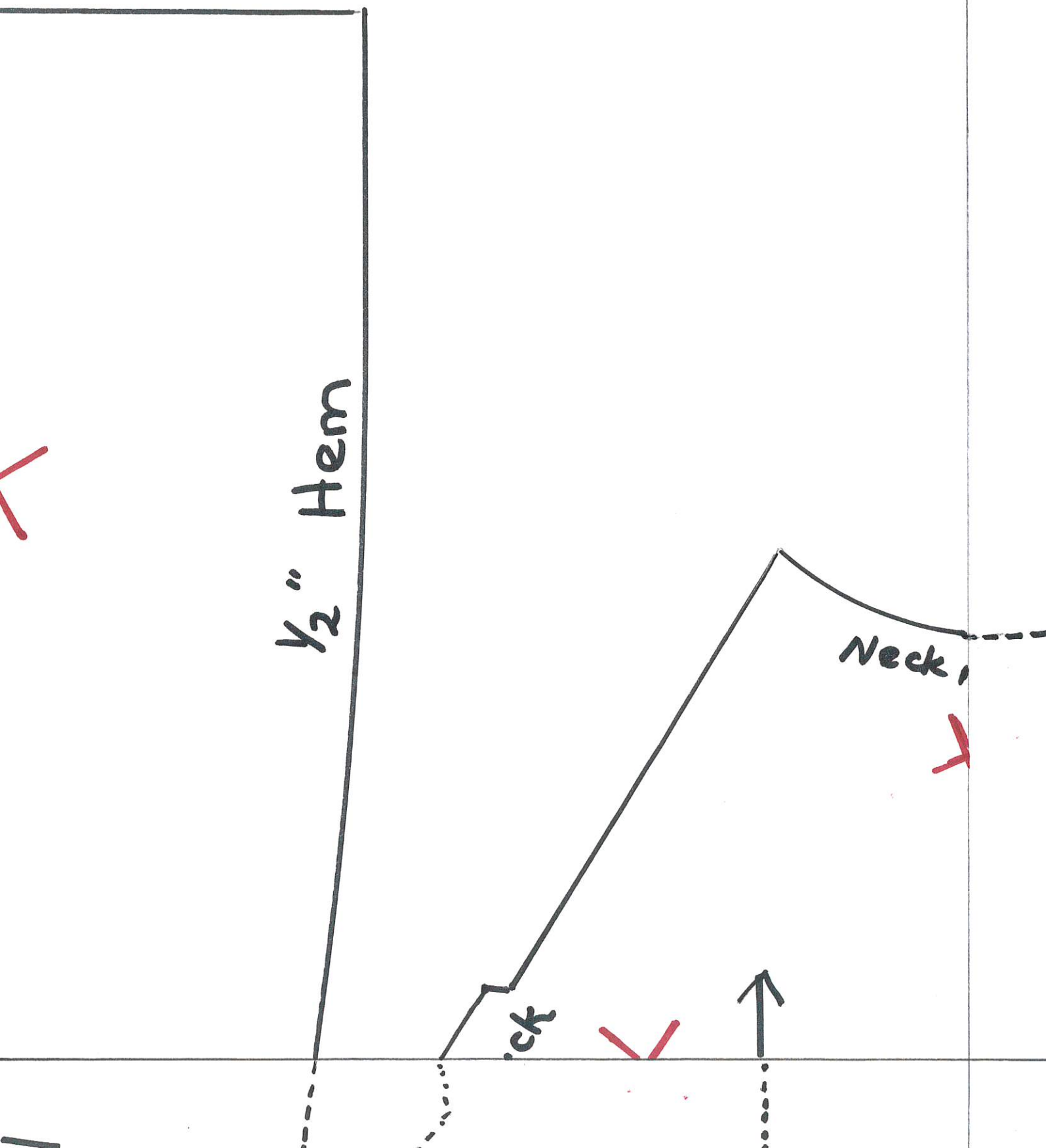
Cut 1 on fold





5/8" Seam
Allowance





Layette Gown Instructions

Updated 9/2022

Please use NEW Cotton, Cotton Knit, or Flannel Fabric

Please do NOT use fabric with the following designs:

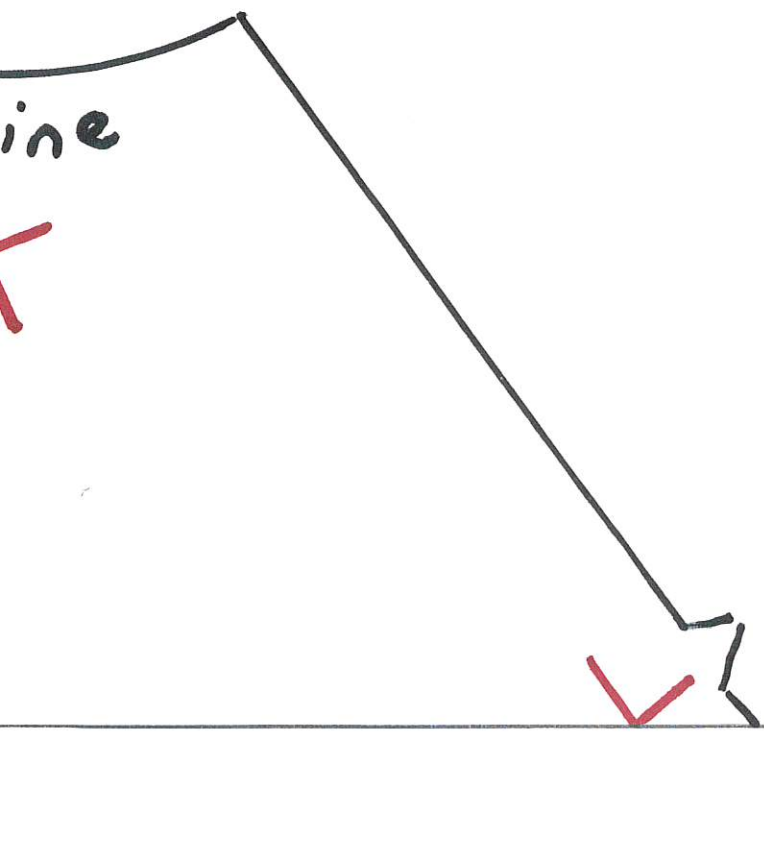
Camouflage, hand prints, foot prints, or paw prints.

Directions:

Use 2/3 yd. of 60" wide Fabric

30 inches of bias tape or ribbon

1. Cut out pieces laid length-wise on the fabric, with the center back on the fold.
2. Stitch or serge sleeves to armhole edges of front and back, matching the small dots. To reinforce seam, stitch again very close to first row, and clip curves. Press seam open.
3. Stitch or serge center front, starting at the mark (4" down from the neckline) to the hemline. Press seam open. Press under half of the 5/8 inch seam allowance around the opening and stitch down to finish the opening.
4. Fold the bias tape or ribbon over the neck edge, leaving the extra length at the front to form the ties. Sew in place and out the length of the ties to sew the ties flat.
5. Turn under 1/4 inch twice in order to hem edge of sleeves. Stitch.
6. Stitch or serge the front to the back all the way from the edge of the sleeves to the bottom hem of the gown, using 5/8 inch seam. Stitch a second time at the underarm area, for reinforcement. Clip curve if necessary.
7. Turn under 1/4 inch twice around hem of gown and stitch.



Layette Gown

Page 6

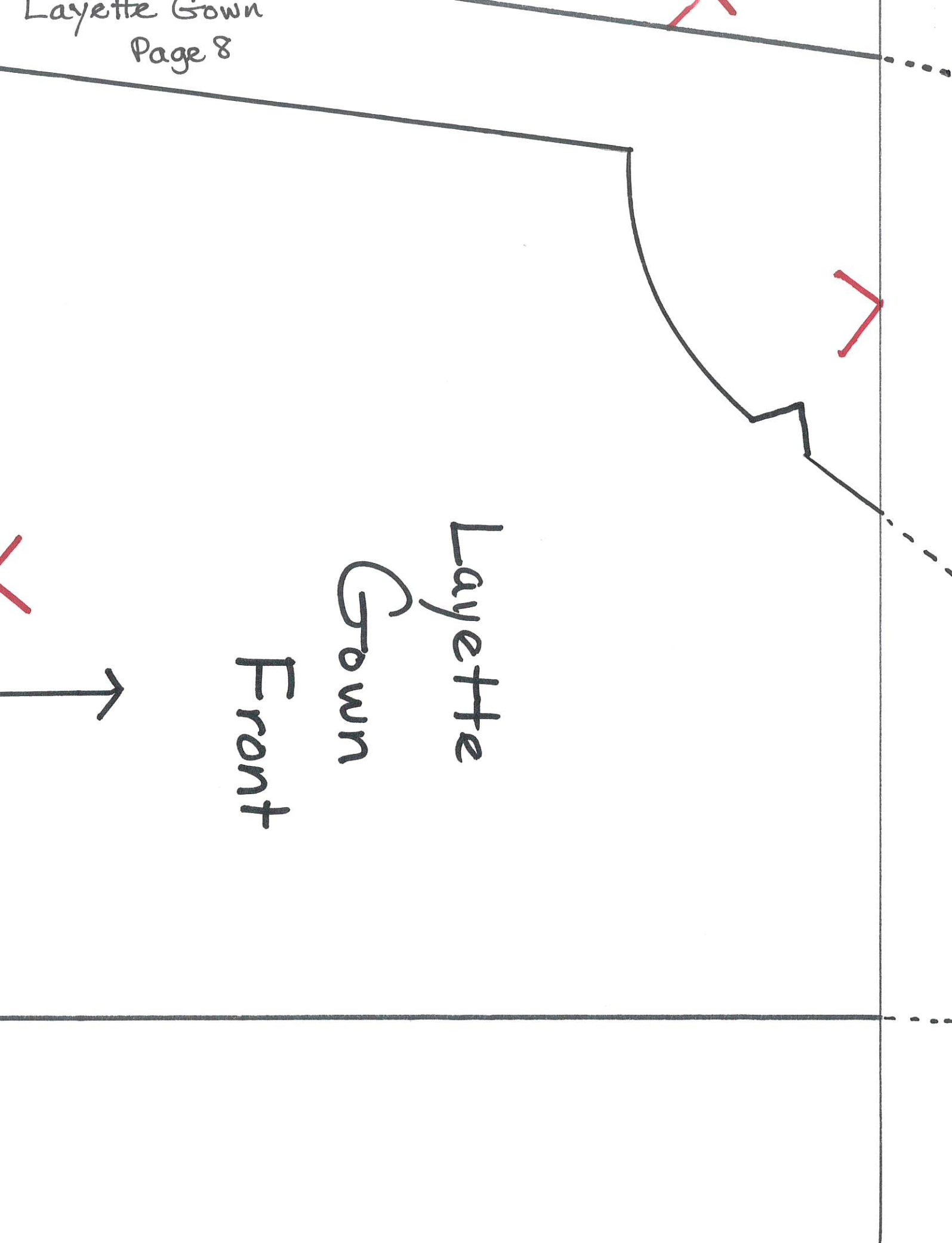
Row 2

1/2" Hem



Cut 2
 $\frac{5}{8}$ " Seam
Allowance

Grain Line



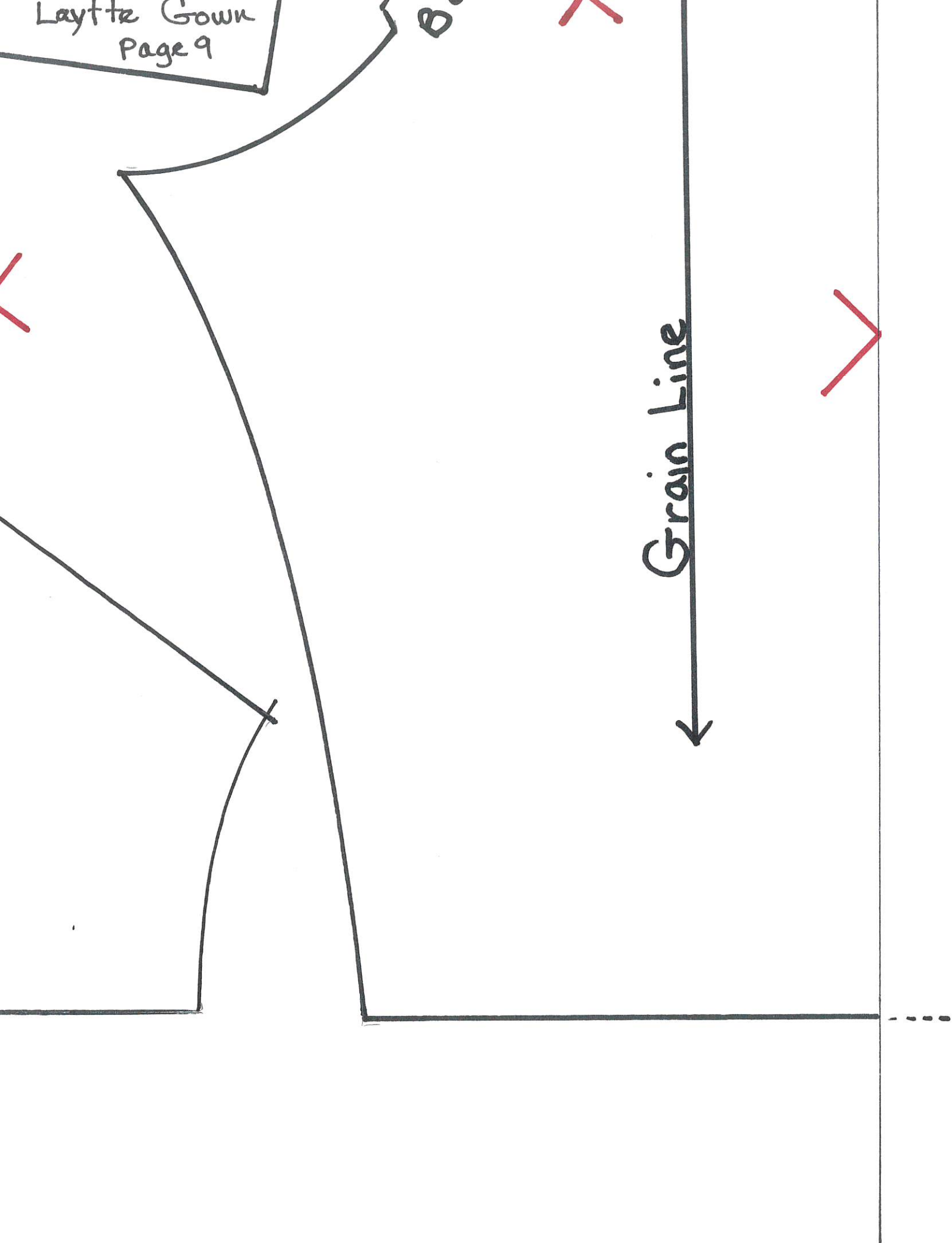
Layette
Gown
Front



Laytte Gown
Page 9

B

Grain Line



Layette Gown
Page 10

Layette Gown

Sleeve

Cut 2

$\frac{5}{8}$ " Seam
Allowance

$\frac{1}{2}$ " Hem