

# Fleece Baby Jacket

## Step-By-Step Instructions

**Please use NEW Polar Fleece. Please do NOT use fabric with camouflage.**

1. Using template, cut out pattern pieces from fleece.

### SHOULDERS

2. Aligning the top shoulder edge of one jacket front piece and jacket back, place right sides together. (Make sure the arm holes match.) Pin the top shoulder edge and sew together using  $\frac{3}{8}$ " seam allowance. Repeat for second jacket front. Jacket front pieces will overlap slightly in front.
3. Open seam and topstitch on either side of sewn seam to secure excess fabric.

### NECKLINE INTERFACING

4. Mark the center of the jacket back at neckline and mark the center of the inside curve of interfacing. Pin interfacing to raw neckline edge of the jacket, right sides together. Sew interfacing to jacket with  $\frac{3}{8}$ " seam allowance. (For photo purposes, we used a contrasting fabric for the interfacing, but you can use any coordinating fleece or the same color.)



### FRONT PLACKET

5. Front placket: fold the edge of each front piece back to edge of interfacing, right side to right side. Measure width of placket and fold the bottom edge back the same width. Pin the length of the jacket front. Sew horizontally across the top neck and bottom hem edges of folded placket. (See picture) Turn folded area back to right side, enclosing the seamed edge. Topstitch both long edges of the placket (near the fold and on the opposite side to secure excess fabric). This forms the reinforced center placket of the jacket where snaps will be added. Repeat steps on the other jacket front piece.



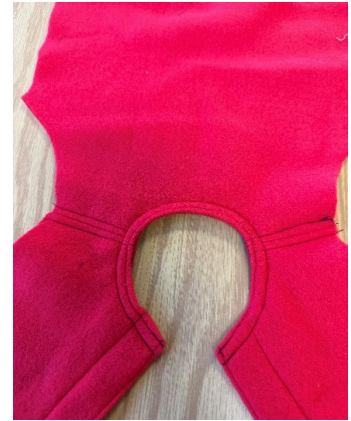
### NECKLINE

6. Pin interfacing down inside jacket and top stitch around entire neckline (including placket) approximately  $\frac{1}{8}$ " –  $\frac{1}{4}$ ". A second line of topstitching can be added for extra reinforcement. Trim excess interfacing close to topstitching.



## **SLEEVES**

7. Pin sleeve to each side of the jacket matching center of sleeve with the shoulder seam. Sew easing fabric if necessary to match.
8. Top stitch the seam toward the sleeve. (Topstitching on the wrong side will help assure you catch the edges of the seam allowance.)
9. Turn under raw edge of sleeve cuffs and secure hem with a zigzag or straight stitch.
10. Sew side and underarm seams of the jacket. Open seam and top stitch each side down stopping at the sleeve.



## **BOTTOM HEM**

11. Turn under the bottom jacket edge and use a zigzag or straight stitch to finish hem.
12. Add three snaps to the placket as marked on pattern or return to Midwest Mission for snaps.

For the pattern or questions regarding these directions, call 217-483-7991 or email [office@midwestmission.org](mailto:office@midwestmission.org).