



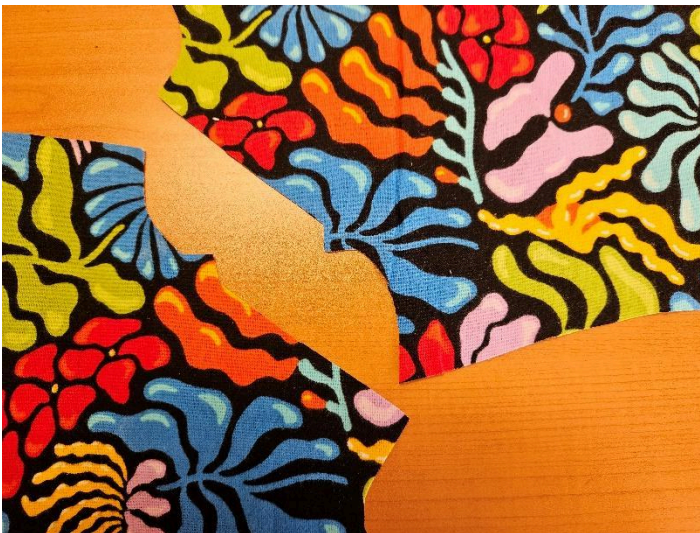
LAYETTE GOWN INSTRUCTIONS

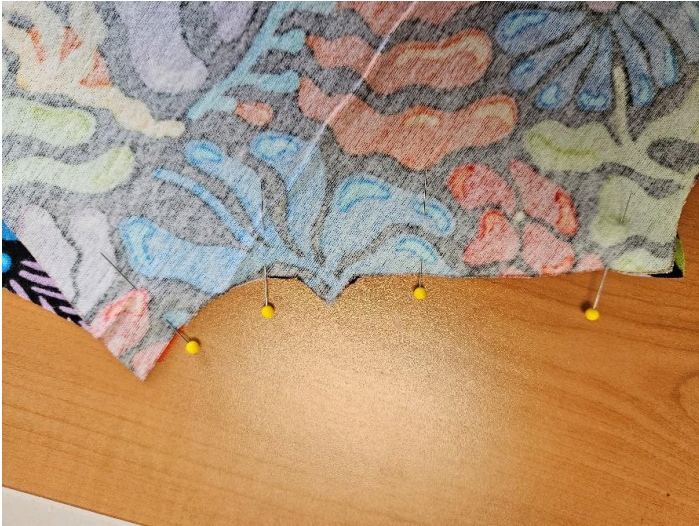
for Novice – Using Straight and Zig-Zag Stitches

1. Cut pieces out of fabric that is folded like you bought it from the bolt. Make sure the center fold of the back of the gown is on the fold of the material. (if there is a right-side-up to your material, make sure you lay out your patterns so the top of the material is the top of your pattern piece).

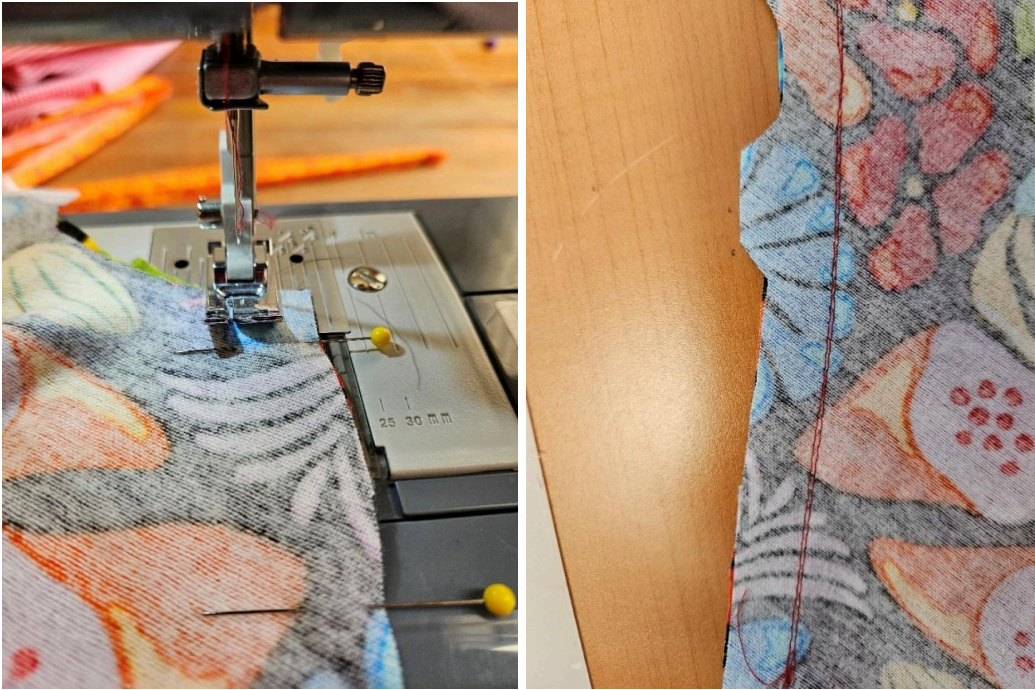


2. Match the sleeve pieces to the on  the front or the on  the back and pin them in place. (I find if you pin them well it helps with sewing them well).





3. Sew each sleeve to the front panel allowing 5/8 inches for the seam and sew it a second time along the same line (double stitch) for durability. Sew the other side of the sleeve to the back panel and double stitch. (A 5/8 inch seam allowance maybe larger than you usually use but the pattern is designed for this).



4. Iron your seams open.



5. Prepare your neck binding/ ties by cutting fabric 1½ inches wide and 30 inches long. Fold it in half and iron it. Open it and then fold each side into the center and iron it. Finally fold it in half again and iron again.



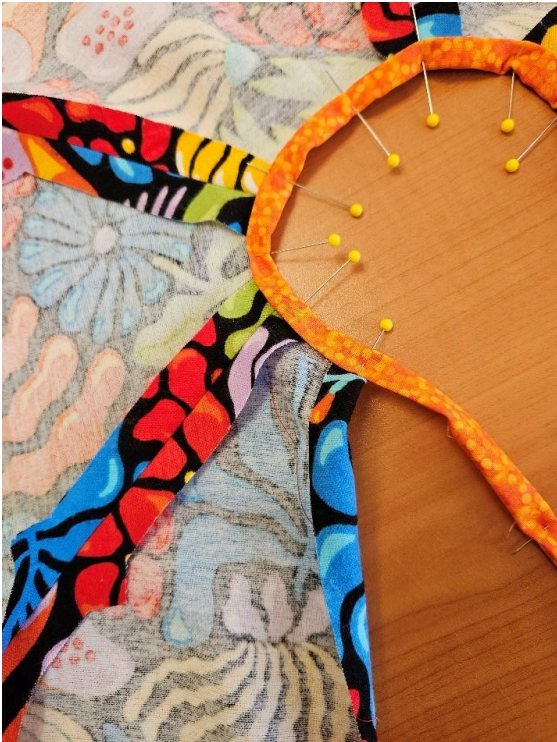


6. Pin the binding round the neck making sure the curve of the neckline is inserted in the binding and the center of the binding is on the center crease of the back. Also make sure the seams are open when pinned to the binding.

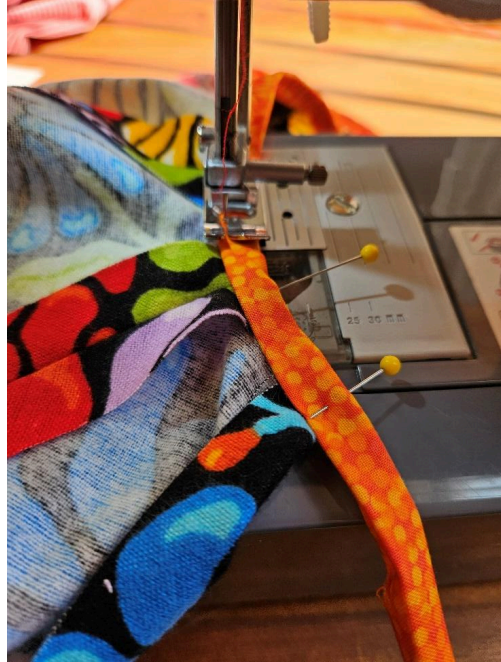




7. Finally, to allow for the 5/8" seam you will be sewing when you join the front pieces of the garment, fold the front of the neck line in 5/8 inch before pinning to the binding/ ties. (It is easier to sew the binding on before you join the two front pieces and make the U of the neck).



8. Turn in the end of the tie and sew it with a zig-zag stitch along the length of the tie, around the neck-line, down the other tie, finishing the other end of the tie by turning it in as well.



9. Join the two front pieces of the gown by stitching them starting 4 inches from the top (which allows for the neck opening) and sewing down to the bottom of the gown. Then iron the seam open. (If you folded in your 5/8 seam allowance as you put on the neck bias/ ties, it should lay flat).



10. Stitch along the U-neckline on both sides to tack down the seam and make the neck look finished. (I reinforce the bottom by double stitching).

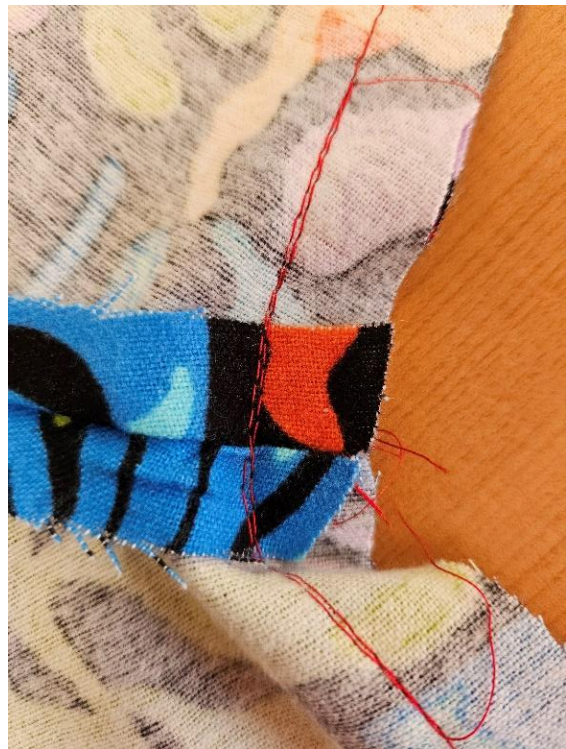


11. Turn under the end of the sleeves $\frac{1}{4}$ inch twice to make a hem, iron and pin. Then use a zigzag or straight stitch to finish the hem of the sleeves.





12. Now you are ready to join the front to the back by sewing from the sleeves to the bottom of the gown allowing a 5/8 seam. Double stitch under the arms to reinforce it. Iron the seams open.



13. Finally, turn up the hem on the bottom of the gown $\frac{1}{4}$ inch twice, iron and pin (making sure the seams are open). Then use a zigzag or straight stitch to finish the hem.

